

乳 蝨 属 两 新 种*

(等翅目: 犀蝨科)

平 正 明

(广东省昆虫研究所)

近年在广东省电白县小良人工林昆虫本底调查中,发现乳蝨(家白蚁)危害榕、桉、台湾相思等活树,20年左右树龄的细叶桉、窿缘桉和大叶桉等约有四分之一的树干被蛀害,看来乳蝨是小良地区桉树的一类重要害虫,并有日益严重的蛀害趋势。现经鉴定,该地区有三种乳蝨,其中两种为新种,特记述于下。

文内量度以毫米计。模式标本均保存于广东省昆虫研究所。

小良乳蝨 *Coptotermes xiaoliangensis* Ping. 新种

兵蝨(图1,表1)

体型中小。头淡黄色,上颚褐色带红,前胸背板淡黄色,腹部乳白色。头被毛稀疏,乳孔毛4根,前胸背板中区毛约10根。

头卵圆形,头阔指数(头最宽/头长至颚基)0.78—0.84,头收缩指数0.57—0.65。乳孔圆拱形,侧面观,孔口垂直,头背缘稍拱起,高于乳孔顶。触角14节。上唇亚三角形。上颚军刀状,颚端稍弯,左上颚基部小钝齿如图1E;左上颚长约为头壳长的0.71—0.77。后颚短而略似棍棒状,最宽区位于前部 $\frac{1}{3}$ 处,向后渐狭弯成一腰位于后部 $\frac{1}{4}$ 处,颚长约为腰狭的3.6倍;侧面观,颚面拱起。前胸背板扁平,前后缘中央凹切,两侧缘渐向后斜。后胫长约为头宽值的0.76—0.82。

比较:本新种和国内已知种台湾乳蝨*C. formosanus* Shiraki极易区别,因其体部量度均甚狭小。

模式产地:广东省电白县小良。兵蝨(正模和副模)工蝨。模式组 I No. E 7622 1983. IV. 8 平正明 采于台湾相思。

* 文内插图由孙宏同志绘制。徐月莉、谢映书、柯铭辉、蓝文明同志参加采集和整理工作,均致谢意。

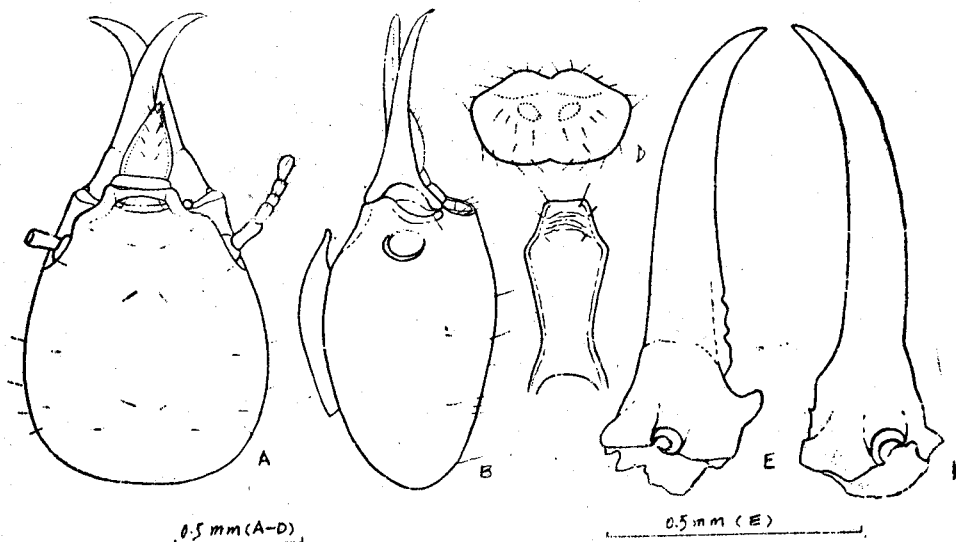


图1 小良乳蠊 *Coptotermes xiaoliangensis* Ping 新种
 A. 头正面; B. 头侧面; C. 后颞; D. 前胸背板; E. 上颚。

表1 小良乳蠊体部量度

项 目	范 围	平 均
头长至颞端	1.96—2.12	2.04
头长至颞基	1.14—1.29	1.24
头 最 宽	0.96—1.08	1.01
头在颞基宽	0.59—0.62	0.61
头高(连颞)	0.72—0.82	0.78
左上颞长	0.85—0.92	0.90
后颞 } 长 } 宽 } 狭	0.74—0.84	0.80
	0.33—0.36	0.35
	0.21—0.22	0.22
前胸背长	0.36—0.40	0.38
前胸背宽	0.66—0.70	0.68
后胫长	0.76—0.84	0.80

(测量个体数5头)

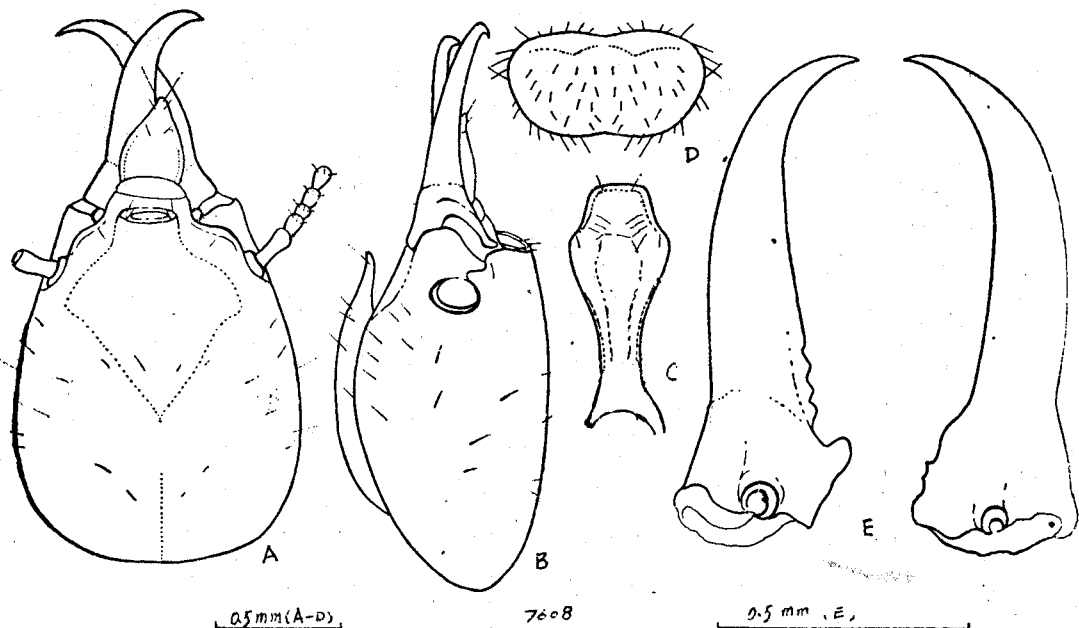


图2 桉树乳蠹 *Coptotermes eucalyptus* Ping 新种
A. 头正面; B. 头侧面; C. 后颞; D. 前胸背板; E. 上颚。

桉树乳蠹 *Coptotermes eucalyptus* Ping 新种

兵蠹 (图2, 表2)

体中型。头淡黄褐色, 上颚紫褐色; 前胸背板淡黄色, 腹部乳白色。头被毛稀疏, 乳孔毛4根, 前胸背板中区毛约20余根。

头卵圆形, 头阔指数0.76—0.80, 头收缩指数0.54—0.76。乳孔扁圆形, 侧面观, 孔口稍向后倾, 孔顶和头背缘几近平直。触角15节。上唇亚三角形。上颚端弯, 左上颚基部小钝齿如图2 E, 左上颚长约为头壳长的0.57—0.61。后颞最宽区位于前部 $\frac{1}{4}$ 处, 向后狭平行成一腰位于后部 $\frac{1}{3}$ 处, 颞长约为腰狭的4.4倍; 侧面观颞面稍拱起。前胸背板扁平, 前后缘中央弱凹缘。后胫长约为头宽值的0.88—0.97。

比较: 本新种和台湾乳蠹 *C. formosanus* Shiraki 之区别如下: 1. 右上颚长0.82—0.88, 非长于0.95。2. 乳孔稍向后倾, 非垂直。

和小良乳蠹 *C. xiaoliangensis* Ping 新种之区别: 1. 头壳长1.41—1.48, 非1.14—1.29。2. 左上颚长为头壳长的0.57—0.61, 非0.71—0.77。3. 后颞腰侧边几近平行, 非狭弯。4. 前胸背板前后缘中央弱凹缘, 非明显凹切。

模式产地: 广东省电白县小良。兵蠹(正模和副模)工蠹。模式组 I NO. E 7617。1983. IV. 8。平正明 采于细叶桉。

表2 桉树乳蚧兵体量度

项 目	范 围	平 均	
头长至颞端	2.14—2.40	2.30	
头长至颞基	1.41—1.48	1.45	
头 最 宽	1.11—1.22	1.14	
头在颞基宽	0.62—0.70	0.65	
头高(连颞)	0.84—0.88	0.86	
左 上 颞 长	0.82—0.88	0.85	
后颞 {	长	0.92—1.00	0.94
	宽	0.36—0.40	0.39
	狭	0.22—0.24	0.22
前 胸 背 长	0.40—0.44	0.43	
前 胸 背 宽	0.72—0.80	0.77	
后 胫 长	1.04—1.11	1.08	

(测量个体数10头)

TWO NEW SPECIES OF THE GENUS COPTOTERMES (ISOPTERA: RHINOTERMITIDAE)

Ping Zheng-ming

(*Guangdong Institute of Entomology*)

Summary

In the present paper, two new species of latex termites from the artificial shelterbelt in Xiaoliang, Dianbai County, Guangdong Province are described. Namely *Coptotermes xiaoliangensis* and *C. eucalyptus*. *Coptotermes* spp. appear to be serious pests of *Eucalyptus exserta*, *E. robusta* and *E. tereticornis* in Xiaoliang. About one quarters of the *Eucalyptus* in the age group twenty years are attacked. This condition is tending to deteriorate.

All measurement are in millimeter. All the type specimens are kept in Guangdong Institute of Entomology.

Coptotermes xiaoliangensis Ping. sp. nov.

Soldier termite (fig. 1, tab. 1,)

Body medium small. Head pale yellow, mandibles reddish brown, pronotum pale yellow, abdomen milky white. Head scantily hairy, with two setae on either side of fontanelle, pronotum disc with about 10 bristles.

Head oval, head width index (maximum width of head / length of head to lateral base of mandible) 0.78-0.84, head contraction index (width of head at side base of mandibles / maximum width of head) 0.57-0.65. Opening of frontanelle vertical, circular. Head seen in profile slightly raised in middle, and slightly sloping downward to fontanelle and posterior margin. Antennae with 14 segments. Labrum subtriangular. Mandibles sabre-shaped, tips slightly incurved, left mandible with crenulations at base as shown in figure 1. E, mandible-head index (length of left mandible / length of head to lateral base of mandible) 0.71-0.77. Postmentum shorter and some what clubshaped, broadest in anterior one-third whence posteriorly the sides gradually bend inward to form a waist in posterior one-fourth, median length about 3.6 times than width of the

waist, postmentum seen in profile arched. Pronotum flat, emarginate anteriorly and posteriorly, lateral sides gradually receding.

Comparisons: *C. xiaoliangensis*, new species, can be easily distinguished from the known China species *C. formosanus* Shiraki by its much smaller size.

Type locality: Xiaoliang of Dianbai County, Guangdong Province. Soldier termites (holotype and paratypes) and worker termites from type series (I. No. E 7622). Collected by Ping, 8, Apr., 1983 in a living tree (*Acacia confusa*)

Coptotermes eucalyptus Ping sp. nov.

Soldier termite (fig. 2, table 2)

Body medium-sized. Head pale yellow brown, mandibles purple brown, pronotum pale yellow, abdomen milky white. Head scantily hairy, with two setae on either side of fontanelle, pronotum disc with over 20 setae.

Head oval, head width index 0.76-0.80, head contraction index 0.54-0.76. Opening of fontanelle slightly sloping posteriorly, oblate. Head seen in profile nearly straight in dorsal margin. Antennae with 15 segments. Labrum subtriangular. Mandibles curved inward at the tips, left mandible with crenulations at base as shown in figure 2, E, mandible-head index 0.57-0.61. Postmentum broadest in anterior one-fourth, whence posteriorly the sides gradually almost parallel inward to form a waist in posterior one-third, length about 4.4 times than width of the waist, postmentum seen in profile slightly arched. Pronotum flat, weakly depressed anteriorly and posteriorly, lateral sides convex.

Comparisons: *C. eucalyptus*, new species, can be easily distinguished from the known China species *C. formosanus* Shiraki by its: 1. Length of left mandible 0.82-0.88 instead of 0.95-1.03. 2. Opening of fontanelle slightly sloping posteriorly instead of vertical. From *C. xiaoliangensis* sp. nov. by its: 1. Length of head to lateral base of mandible 1.41-1.48 instead of 1.14-1.29. 2. Mandible-head index 0.57-0.61 instead of 0.71-0.77. 3. Waist of postmentum almost parallel instead of bend inward. 4. Pronotum weakly depressed anteriorly and posteriorly instead of emarginate.

Type locality: Xiaoliang of Dianbai County, Guangdong Province. Soldier termites (holotype and paratypes) and worker termites from type series (I. No. E. 7617). Collected by Ping, 8, Apr., 1983 in a living tree (*Eucalyptus tereticornis*).