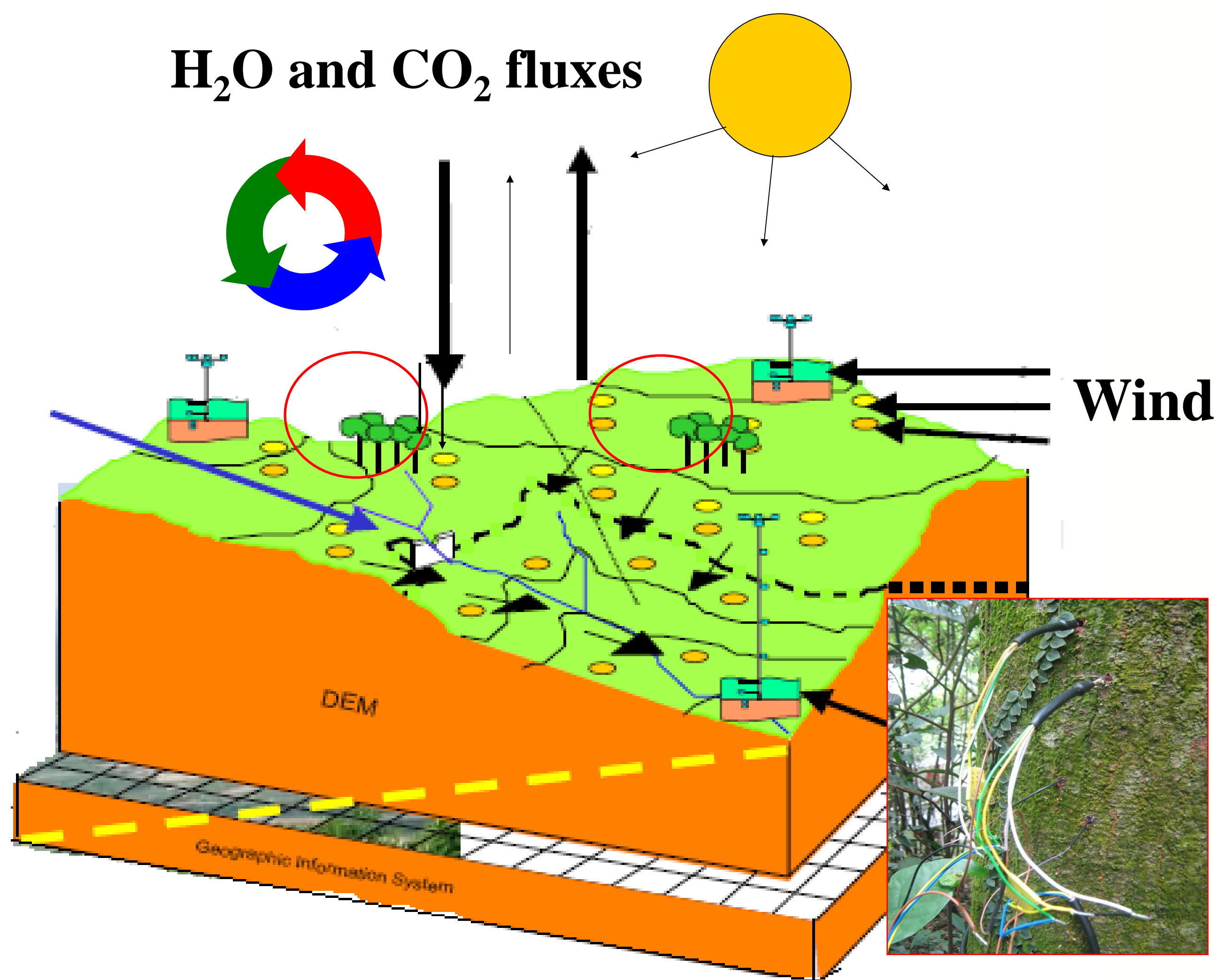


## Main research focus:

H<sub>2</sub>O & CO<sub>2</sub> fluxes in the ecosystem and exchanges with the atmosphere: Regulation of processes

## Some preliminary results

2010 weather, soil moisture and mean tree water use at the 20 m elevation (GH) site.

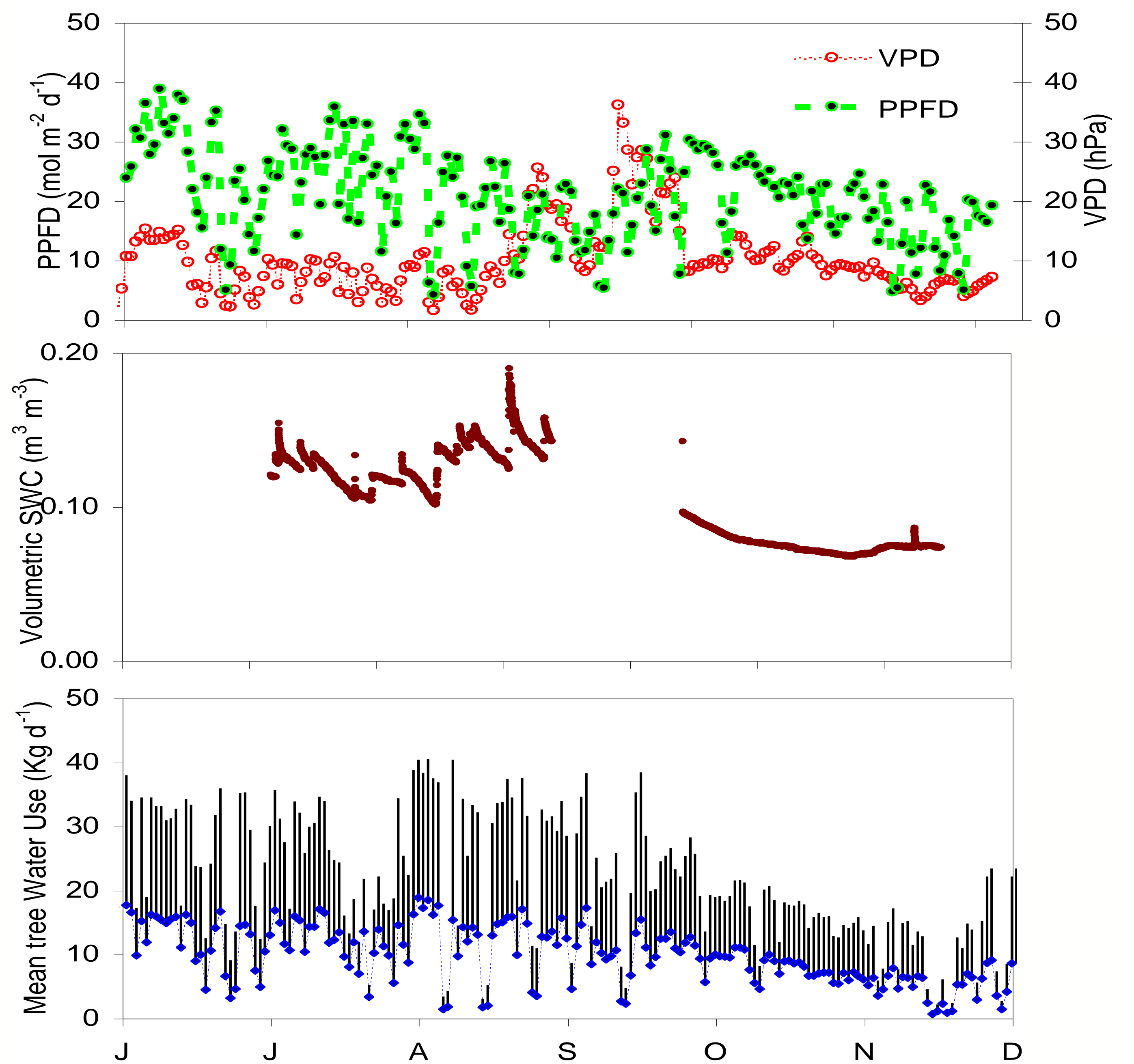
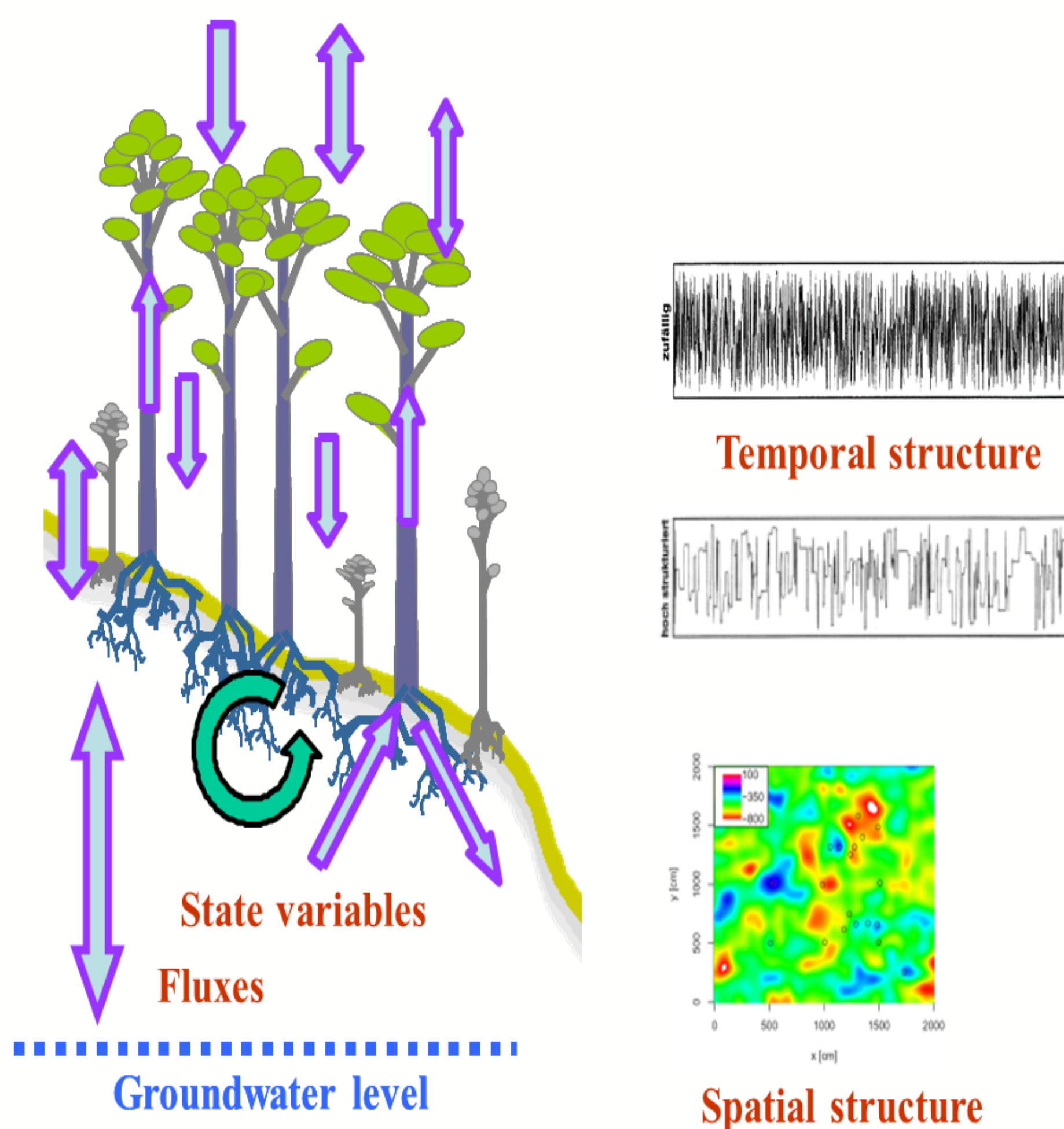


H<sub>2</sub>O flux

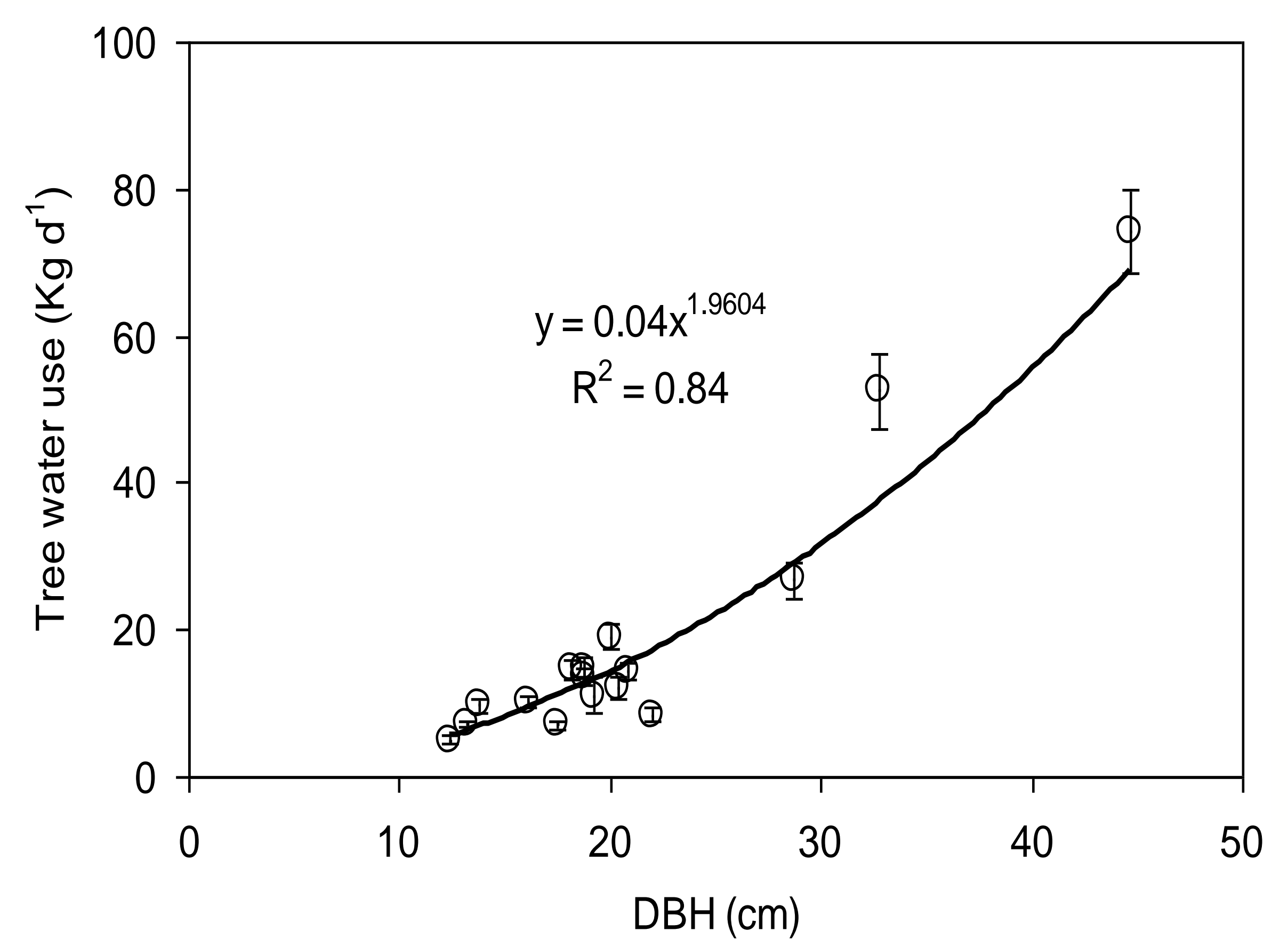
Links to Climate regulation

Precipitation

- Sapflow
- Transpiration
- Soil evaporation
- Throughfall
- Infiltration
- Redistribution
- Root water uptake and redistribution
- Water storage
- Water availability
- Seepage
- Capillary rise



## Influence of tree size on tree water use



## Methods

**Sap flow:** Granier's thermal dissipation probes

**Microclimate parameters:** temperature, relative humidity, photosynthetic active radiation, soil moisture, rainfall, etc.

**Community survey**

**Surprisingly, trees converge in their water use irrespective of species**

